

ADMISSION PRICES

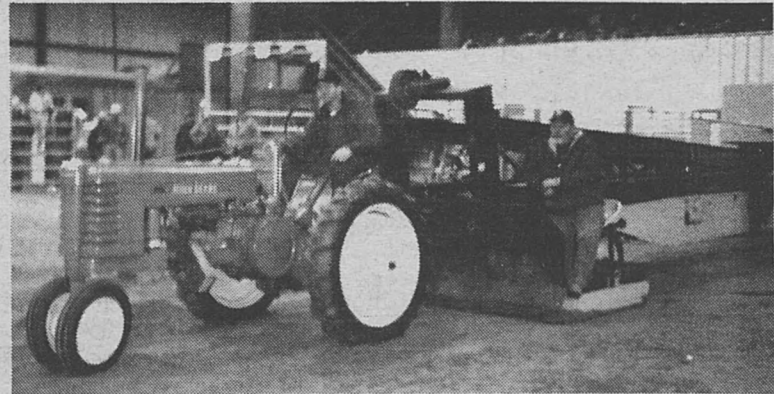
BBQ Cookoff Judging:

Chicken	4:00 p.m.
Beans	4:30 p.m.
Pork Ribs	5:00 p.m.
Brisket	6:00 p.m.
Mobile Dairy Classroom	4:00 p.m. - 8:00 p.m.
Karaoke Show	4:30-6:30 p.m.
Rodeo Pre Show	7:00 p.m.
CPRA Rodeo & Calf Scramble	7:30 p.m.
Texas Unlimited Band (Entertainment Pavilion)	9:00 p.m.
Gary Allan (Entertainment Pavilion)	10:30 p.m.
Texas Unlimited Band (Entertainment Pavilion)	Midnight
H.E./Fine Arts Building Close	1:00 a.m.
Fairgrounds Close	1:00 a.m.

Season Pass (In Advance From Queen Contestants)	\$15.00
Daily Pass (at the gate)	
Thursday & Friday (Fri. after 4 p.m. \$10).....	\$5.00
Saturday	\$10.00
Sunday.....	\$5.00
Senior Citizens (w/Medicare Card).....	FREE
Students (age 6 thru 12).....	\$ 3.00
Ages 5 and under	FREE

SUNDAY, SEPTEMBER 15

Livestock Gate Opens	7:00 a.m.
H.E./Fine Arts Building Open	8:00 a.m.
Check Out For All Sale Animals	8:00 a.m.
Fairgrounds Open	9:00 a.m.
Cowboy Church	9:00 a.m.
All Sale Animals Must Be Removed From Grounds	10:00 a.m.
Carnival Open	2:00 p.m.
Go Texan Open Horseshoe & Washer Pitching	
Sign-in	12 noon
Play begins.....	1 p.m.
Steer Roping	1:00 p.m.
Mobile Dairy Classroom	1:00 p.m. - 4:00 p.m.
Todd Fritsch w/Southern Daze (Entertainment Pavilion)	1:00 - 5:00 p.m.
Preddie Prez	1:00-5:30 p.m.
Pet Show Check In (H.E./Fine Arts Building).....	2:30 p.m.
Pet Show.....	3:00 p.m.
Dan Barth Medicine Show & Wagon Exhibit	2:30, 4:00 & 5:30 p.m.
Delbert Kasselmann Chuck Wagon	3:00-6:00 p.m.
Karaoke Show	3:00-5:00 p.m.
Photos of Contest Winners (H.E./Fine Arts Building)	5:00 p.m.
(Fine Arts, Home Economics)	
Exhibits May Be Removed	5:00 p.m. - 6:30 p.m.
Exhibits Close (H.E./Fine Arts Building)	6:00 p.m.
Fairgrounds Close	6:00 p.m.



Antique Tractor Pull And Engine Display

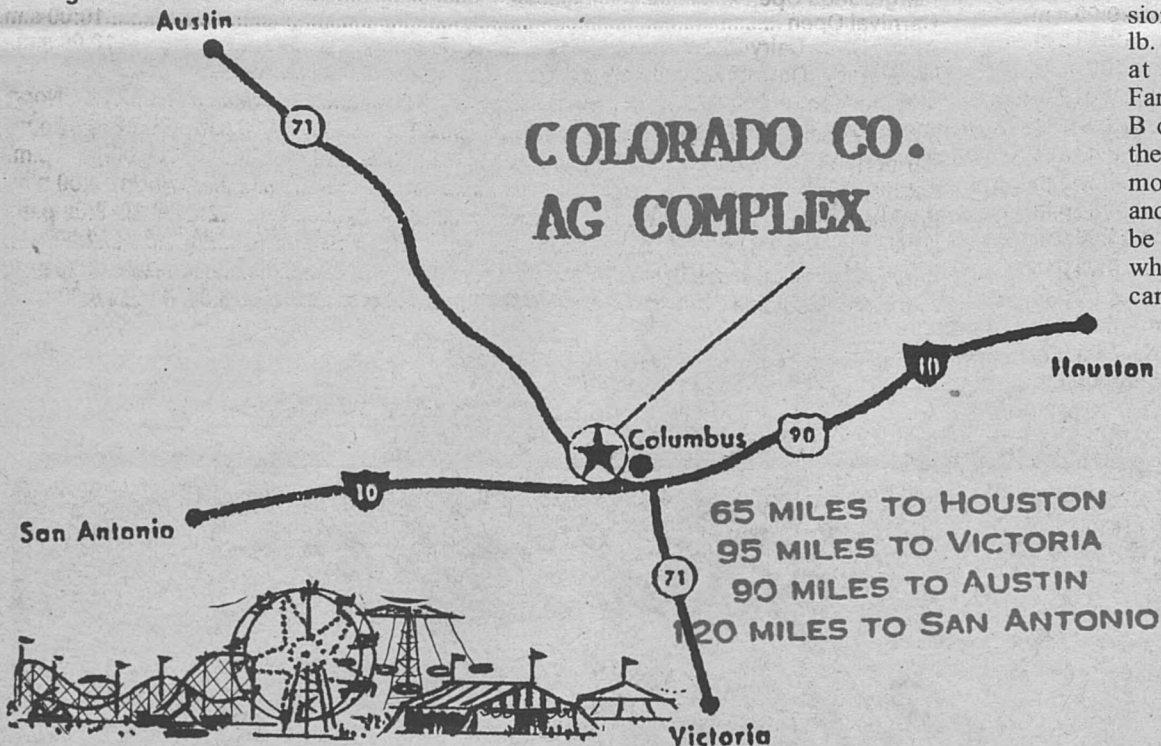
This year's 24th Annual Fair will host a tractor pull for the old tractors that our "experienced" or "wiser" citizens grew up with. We are inviting anyone that has a 1957 or older tractor to pull a sled that is made for antique tractors.

We will have four divisions with weight classes in each division. Division I starts with a 3100 lb. stock tractor as you would use at the farm. An example is a Farmall A or B or Allis-Chalmers B or C. The higher the division, the more the stock tractor can be modified for higher horsepower and more pulling power. There will be a scale positioned at the start which keeps everyone honest and can be used Friday for practice

pulls and Saturday for weight adjustments.

Anyone that pulls will be charged \$15.00 hook fee on Saturday during the competition for each pull. Trophies will be awarded and all participants will receive special treatment for helping make the Antique Tractor and Engine Display something to remember.

Pull sled and scale from Bicknell/Miller/Lancaster/Lawler and Texas Antique Tractor Pull Association rules will be our guideline. Contact Franklin Hudec at 713-224-5326 (work) or 979-732-5863 (home) or Keith Potter at 979-732-6201 for information.



Junior Livestock Sale

2:00 p.m.
Saturday, Sept. 14
Livestock Barn

THE FIRST National Bank of Eagle Lake

Supporting The Colorado County Community And Its Fair

Eagle Lake, Texas

234-5591

Member F.D.I.C.